



Course Book

Host Sponsor



Co-Sponsors



Race Schedule – Appendix 1

Maximum Number of Races per Class: 10

The first warning signal will be at 10:00 hrs on each racing day, unless the “Around the Island” Offshore Race is planned. See SI 6.7

Sunday 22nd May - Practice Race

Time of first warning signal 13.00

Monday 23rd May

Time of first warning signal 10.00

Tuesday 24th May

Time of first warning signal 10.00

Wednesday 25th May

Time of first warning signal 10.00

Thursday 26th May

Reserve Day

Friday 27th May

Time of first warning signal 10.00

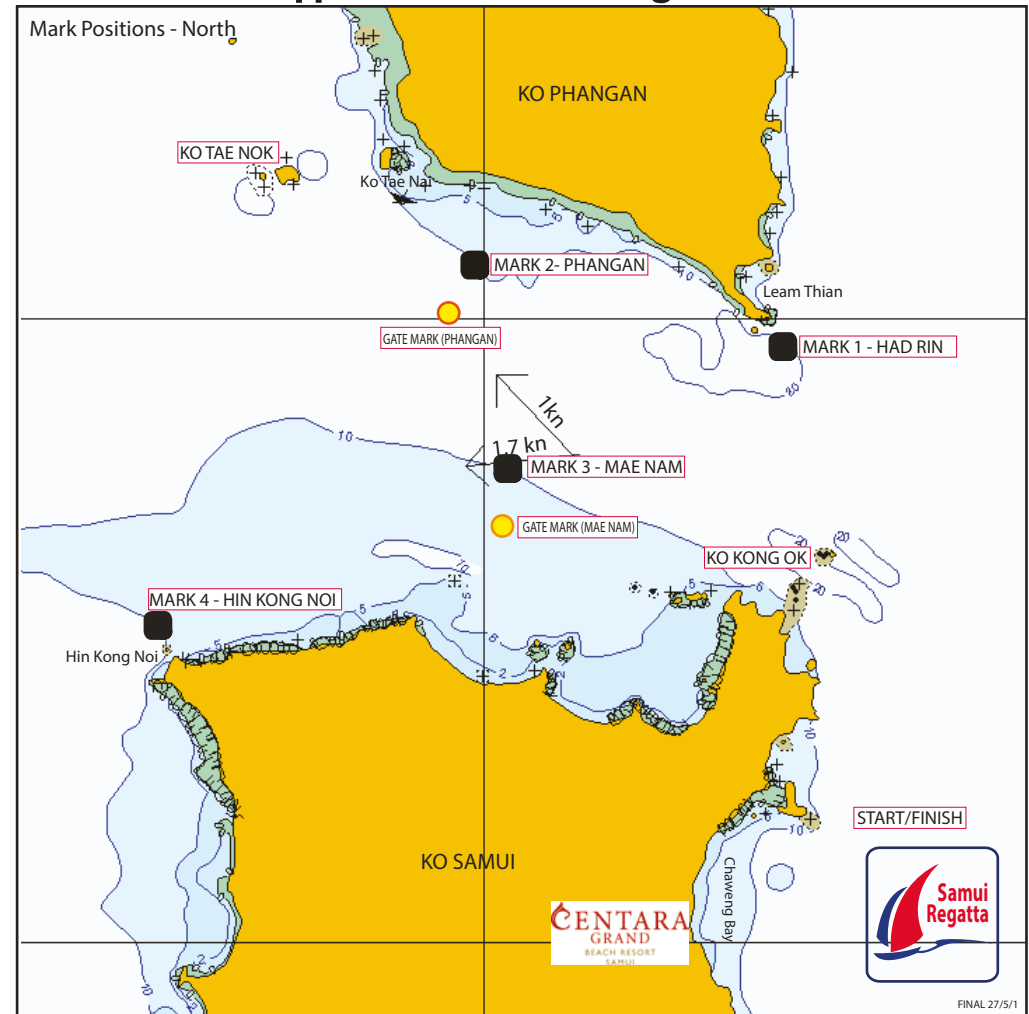
Saturday 28th May

Time of first warning signal 10.00

When more than one race will be held on the same day, the warning signal for each succeeding race will be made as soon as practicable.



Appendix 2 - Course Diagrams



Coastal Courses

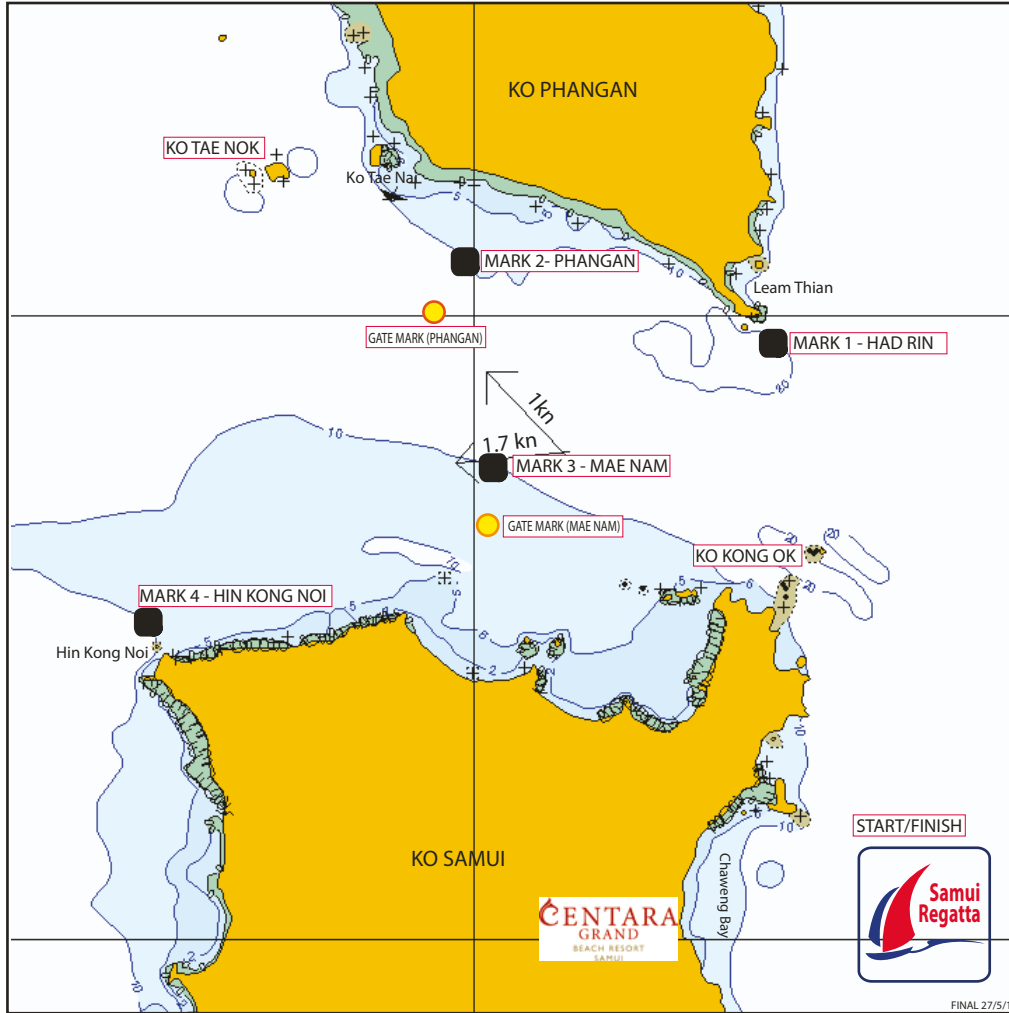
Mark Positions - North

REGATTA HQ (CENTARA GRAND BEACH RESORT)	N 9° 31.11	E100° 03.58
MARK 1 - HAD RIN	N 9° 39.28	E100° 04.83
MARK 2 - PHANGAN	N 9° 40.89	E100° 00.08
MARK 3 - MAE NAM	N 9° 37.50	E100° 00.55
MARK 4 - HIN KONG NOI	N 9° 34.94	E 99° 55.12
KO TAE NOK	N 9° 42.25	E 99° 56.45
KO KONG OK	N 9° 36.25	E100° 05.65

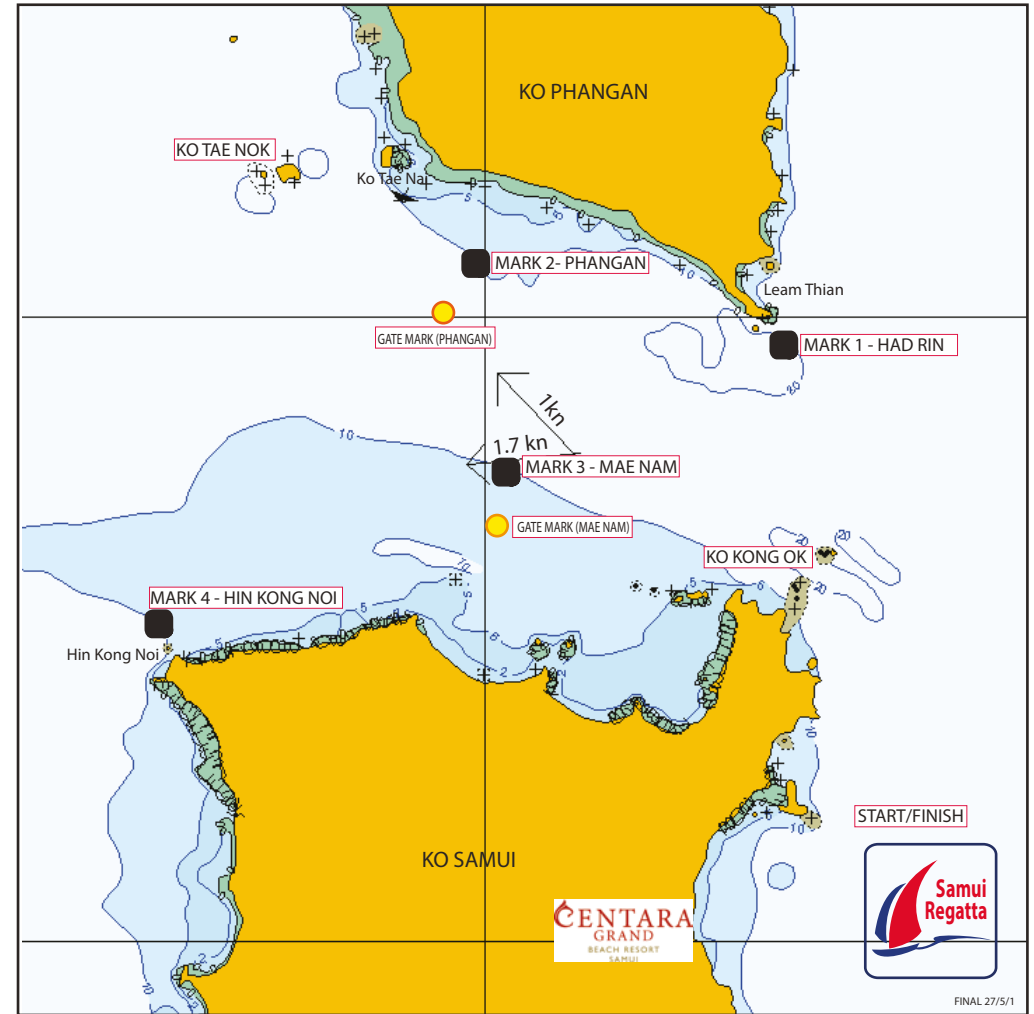
Mark positions shown in the course diagrams are for illustration only.

If there is any discrepancy between a course diagram and the written description, then the written description shall prevail.

North Courses 1, 2, 3



North Courses 4, 5, 6



Coastal Courses

COURSE 1
DISTANCE APPROX 22 NM

START
PASS **KO KONG OK** TO PORT
ROUND **MARK 1 - HAD RIN** TO PORT
ROUND **MARK 2 - PHANGAN** TO PORT
AND PASS THROUGH **GATE**
(LEAVING **MARK 2 - PHANGAN** TO PORT)
ROUND **KO KONG OK** TO STARBOARD
FINISH

COURSE 2
DISTANCE APPROX 32 NM

START
PASS **KO KONG OK** TO PORT
ROUND **MARK 1 - HAD RIN** TO PORT
PASS **MARK 2 - PHANGAN** TO PORT
ROUND **KO TAE NOK** TO PORT
THROUGH **GATE MARK 2 - PHANGAN**
ROUND **KO KONG OK** TO STARBOARD
FINISH

COURSE 3
DISTANCE APPROX 28 NM

START
PASS **KO KONG OK** TO PORT
ROUND **MARK 2 - PHANGAN** TO PORT,
ROUND **MARK 3 - MAE NAM** TO PORT
AND PASS THROUGH **GATE**
(LEAVING **MARK 3 - MAE NAM** TO PORT)
ROUND **KO KONG OK** TO STARBOARD
FINISH

Mark positions shown in the course diagrams are for illustration only.
If there is any discrepancy between a course diagram and the written description, then the written description shall prevail.

Coastal Courses

COURSE 4
DISTANCE APPROX 36 NM

START
PASS **KO KONG OK** TO PORT
ROUND **MARK 2 - PHANGAN** TO PORT
ROUND **MARK 4 - HIN KONG NOI** TO PORT
THROUGH **GATE MARK 3 - MAE NAM**
ROUND **KO KONG OK** TO STARBOARD
FINISH

COURSE 5
DISTANCE APPROX 26 NM

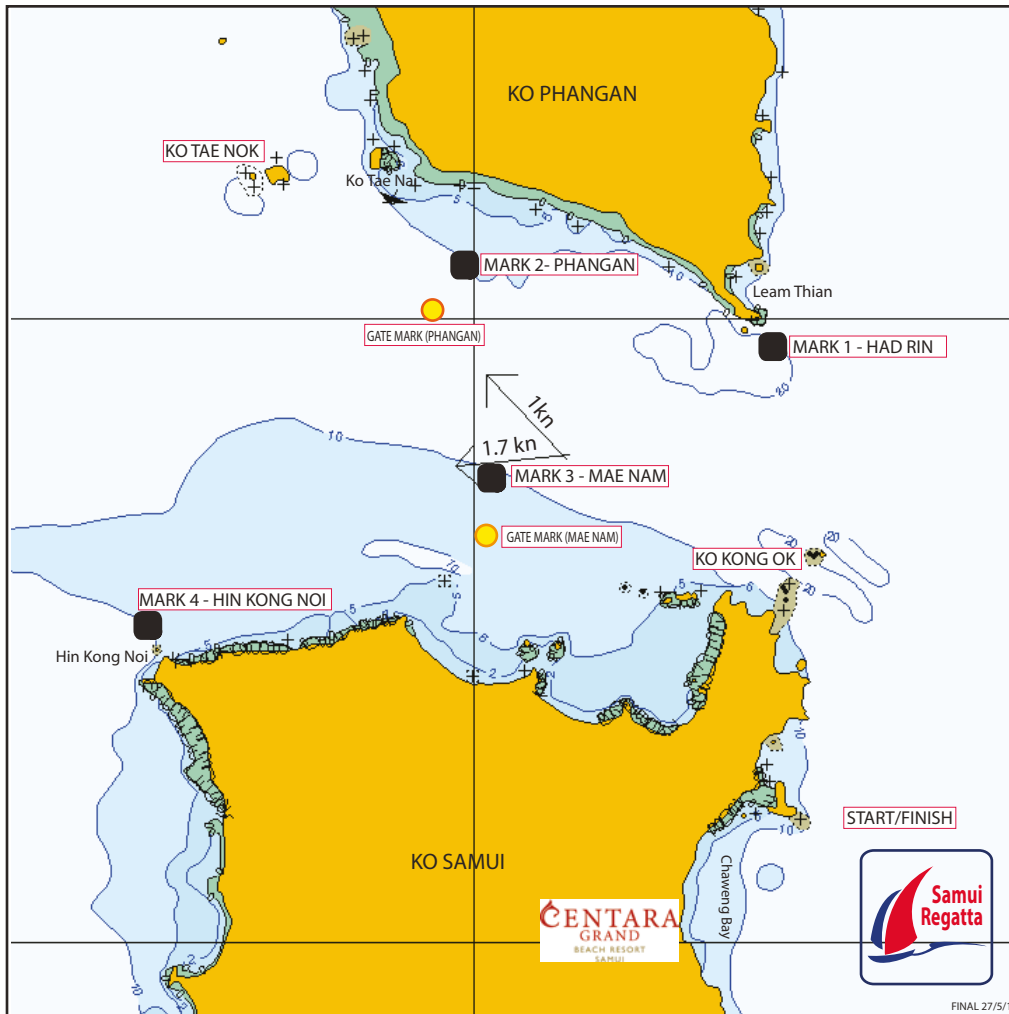
START
PASS **KO KONG OK** TO PORT
ROUND **MARK 1 - HAD RIN** TO PORT
ROUND **MARK 3 - MAE NAM** TO PORT
AND **PASS THROUGH GATE**
(LEAVING **MARK 3 - MAE NAM** TO PORT)
ROUND **KO KONG OK** TO STARBOARD
FINISH

COURSE 6
DISTANCE APPROX 35 NM

START
PASS **KO KONG OK** TO PORT
ROUND **MARK 1 - HAD RIN** TO PORT
ROUND **MARK 4 - HIN KONG NOI** TO PORT
THROUGH **GATE MARK 3 - MAE NAM**
ROUND **KO KONG OK** TO STARBOARD
FINISH

Mark positions shown in the course diagrams are for illustration only.
If there is any discrepancy between a course diagram and the written description, then the written description shall prevail.

North Courses 7,8



Coastal Courses

COURSE 7

DISTANCE APPROX 16 NM

START
PASS **KO KONG OK** TO PORT
ROUND **MARK 3 - MAE NAM** TO PORT
AND **PASS THROUGH GATE**
(LEAVING MARK 3 - MAE NAM TO PORT)
ROUND **KO KONG OK** TO STARBOARD
FINISH

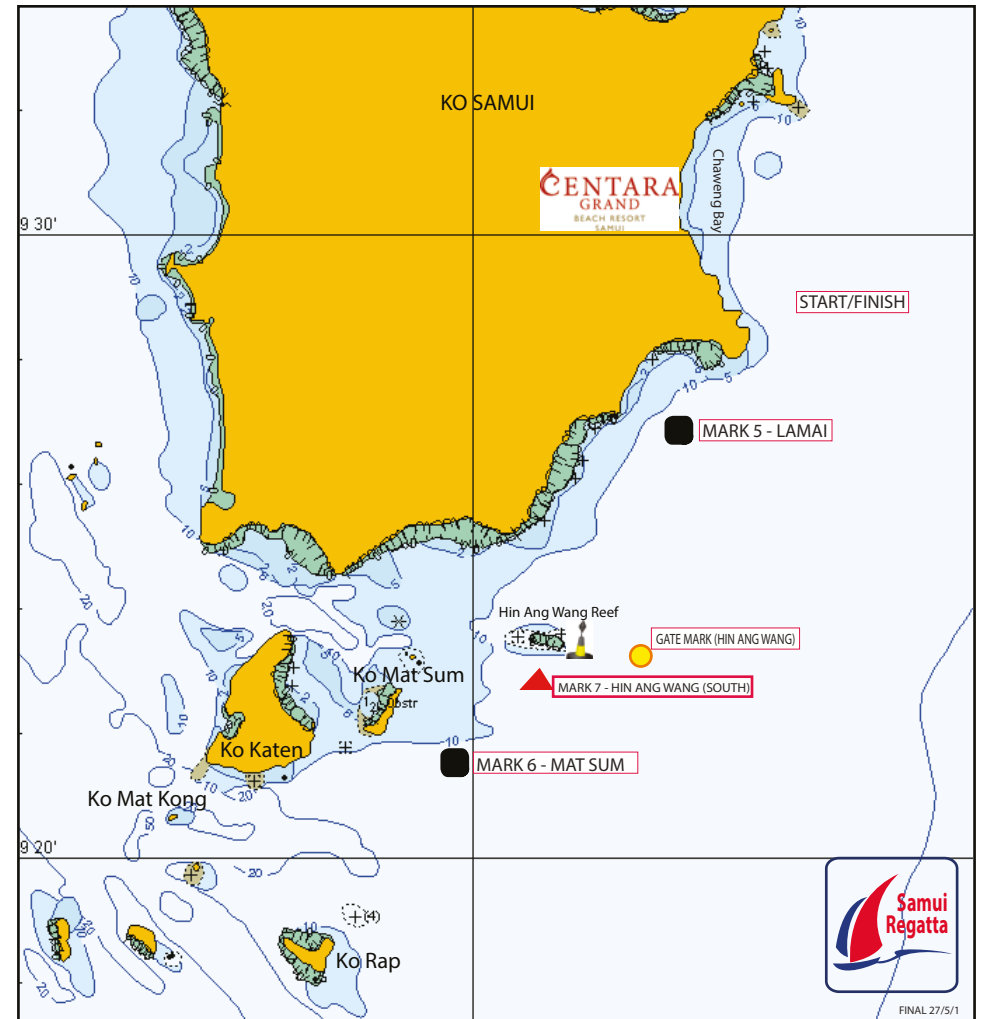
COURSE 8

DISTANCE APPROX 17 NM

START
PASS **KO KONG OK** TO PORT
ROUND **MARK 1 - HAD RIN** TO PORT
PASS **KO KONG OK** TO STARBOARD
FINISH

Mark positions shown in the course diagrams are for illustration only.
If there is any discrepancy between a course diagram and the written description, then the written description shall prevail.

South Course Mark Positions



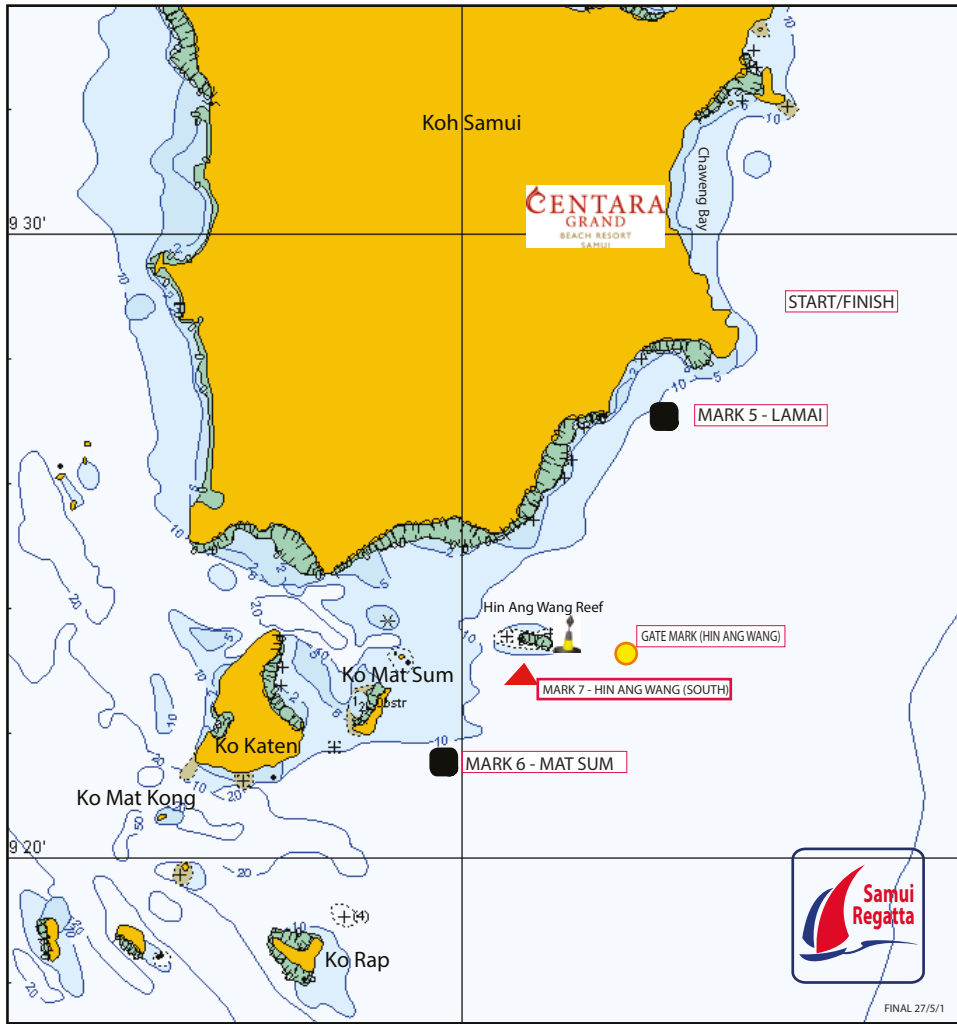
Coastal Courses

Mark Positions - South

MARK 5 - LAMAI	N9° 26.68	E 100° 03.47
HIN ANG WANG REEF	REEF EXTENDS at N9° 23.57 between E 100° 00.50 and E 100° 01.80 YACHTS SHALL NOT PASS BETWEEN HIN ANG WANG REEF AND THE EAST CARDINAL MARK	
HIN ANG WANG (Cardinal Mark)	N9° 23.44	E 100° 02.18
MARK 6 - MAT SUM	N9° 21.50	E 99° 59.40
MARK 7 - HIN ANG WANG (SOUTH)	N9° 23.00	E 100° 01.20

Mark positions shown in the course diagrams are for illustration only.
If there is any discrepancy between a course diagram and the written description, then the written description shall prevail.

South Courses 9, 10, 11



Coastal Courses

COURSE 9
DISTANCE APPROX 22 NM

START
ROUND **MARK 5 - LAMAI** TO PORT
PASS **HIN ANG WANG REEF** TO PORT
ROUND **MARK 6 - MAT SUM** TO PORT
THROUGH **GATE HIN ANG WANG**
(Gate is between yellow/black
Cardinal Mark and Buoy)
FINISH

COURSE 10
DISTANCE APPROX 30 NM

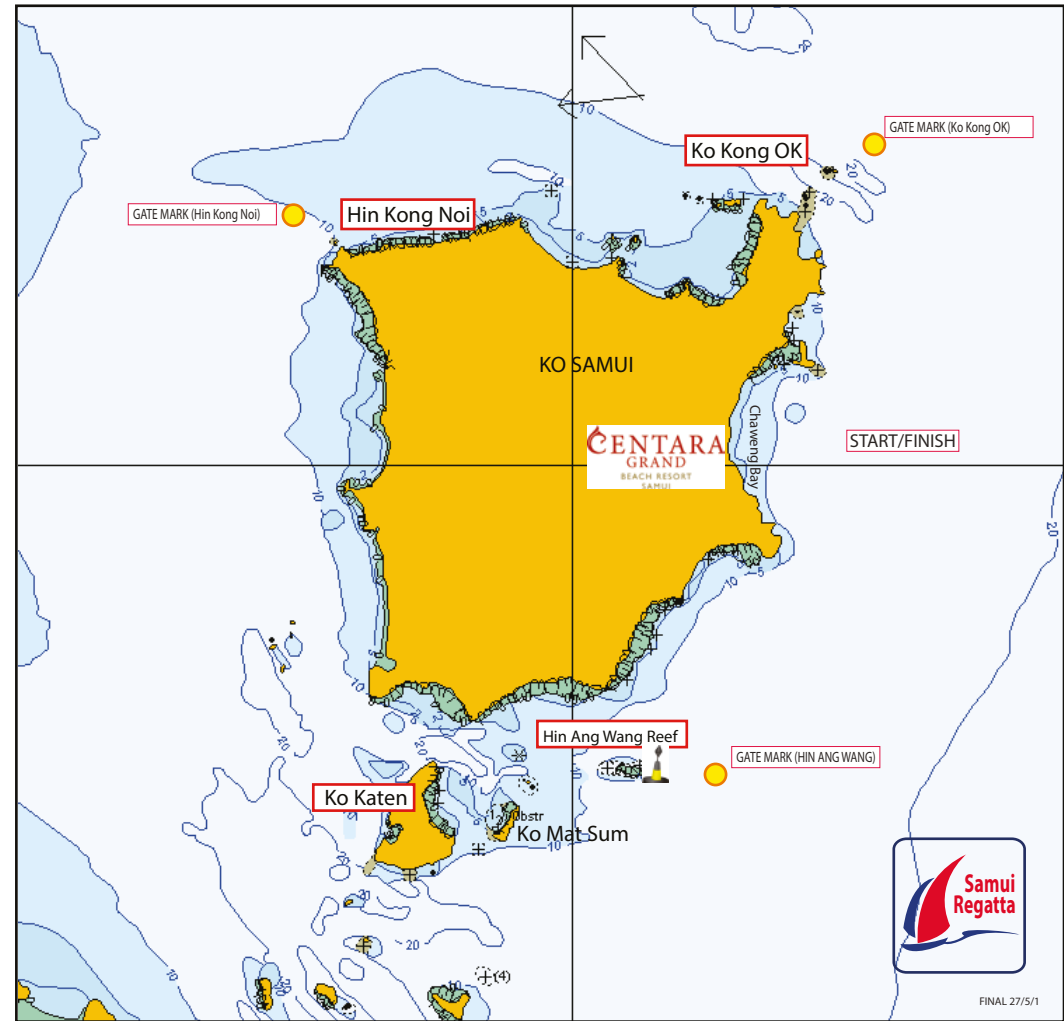
START
ROUND **MARK 5 - LAMAI** TO PORT
PASS **HIN ANG WANG REEF** TO PORT
ROUND **MARK 6 - MAT SUM** TO PORT
ROUND **KO RAP** TO PORT
THROUGH **GATE HIN ANG WANG**
(Gate is between yellow/black
Cardinal Mark and Buoy)
FINISH

COURSE 11
DISTANCE APPROX 18 NM

START
ROUND **MARK 5 - LAMAI** TO PORT
ROUND **HIN ANG WANG REEF** TO PORT
ROUND **MARK 7 - HIN ANG WANG (SOUTH)** TO PORT
PASS THROUGH **GATE HIN ANG WANG**
(Gate is between yellow/black
Cardinal Mark and Buoy)
FINISH

Mark positions shown in the course diagrams are for illustration only.
If there is any discrepancy between a course diagram and the written description, then the written description shall prevail.

"Round the Island" Courses 12, 12B, 14, 14B



Offshore Courses - "Around the Island"

COURSE 12
DISTANCE APPROX 40 NM

START
PASS **HIN ANG WANG REEF** TO PORT
PASS **KO KATEN** TO PORT
THROUGH **GATE HIN KONG NOI**
(Gate is between **HIN KONG NOI**
and Buoy)
THROUGH **GATE KO KONG OK**
(Gate is between **KO KONG OK**
and Buoy)
FINISH

COURSE 12B
DISTANCE APPROX 40 NM

START
PASS **KO KONG OK** TO PORT
THROUGH **GATE HIN KONG NOI**
(Gate is between **HIN KONG NOI**
and Buoy)
PASS **KO KATEN** TO STARBOARD
THROUGH **GATE HIN ANG WANG**
(Gate is between yellow/black
Cardinal Mark and Buoy)
FINISH

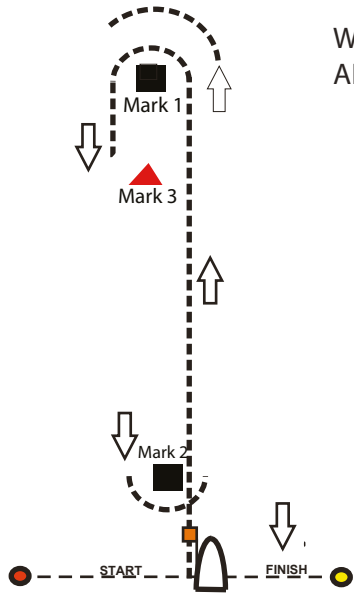
COURSE 14
DISTANCE APPROX 48 NM

START
THROUGH **GATE HIN ANG WANG**
(Gate is between yellow/black
Cardinal Mark and Buoy)
PASS **KO KATEN** TO STARBOARD
THROUGH **GATE HIN KONG NOI**
(Gate is between **HIN KONG NOI**
and Buoy)
THROUGH **GATE KO KONG OK**
(Gate is between **KO KONG OK**
and Buoy)
FINISH

COURSE 14 B
DISTANCE APPROX 48 NM

START
PASS **KO KONG OK** TO PORT
THROUGH **GATE HIN KONG NOI**
(Gate is between **HIN KONG NOI**
and Buoy)
PASS **KO KATEN** TO PORT
THROUGH **GATE HIN ANG WANG**
(Gate is between yellow/black
Cardinal Mark and Buoy)
FINISH

Mark positions shown in the course diagrams are for illustration only.
If there is any discrepancy between a course diagram and the written description, then the written description shall prevail.

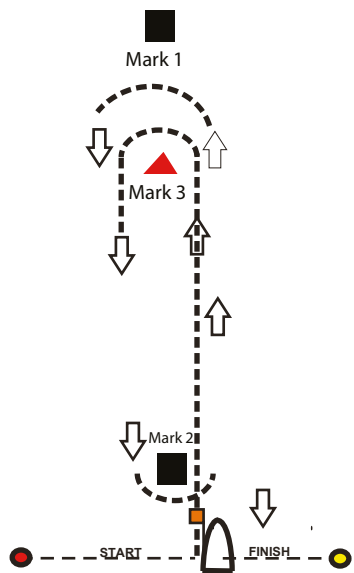


Windward/Leeward Courses
ALL MARK ROUNDINGS TO PORT

COURSE 15
START - 1 - Finish

COURSE 16
START - 1 - 2 - 1 - FINISH

COURSE 17
START - 1 - 2 - 1 - 2 - 1 - FINISH

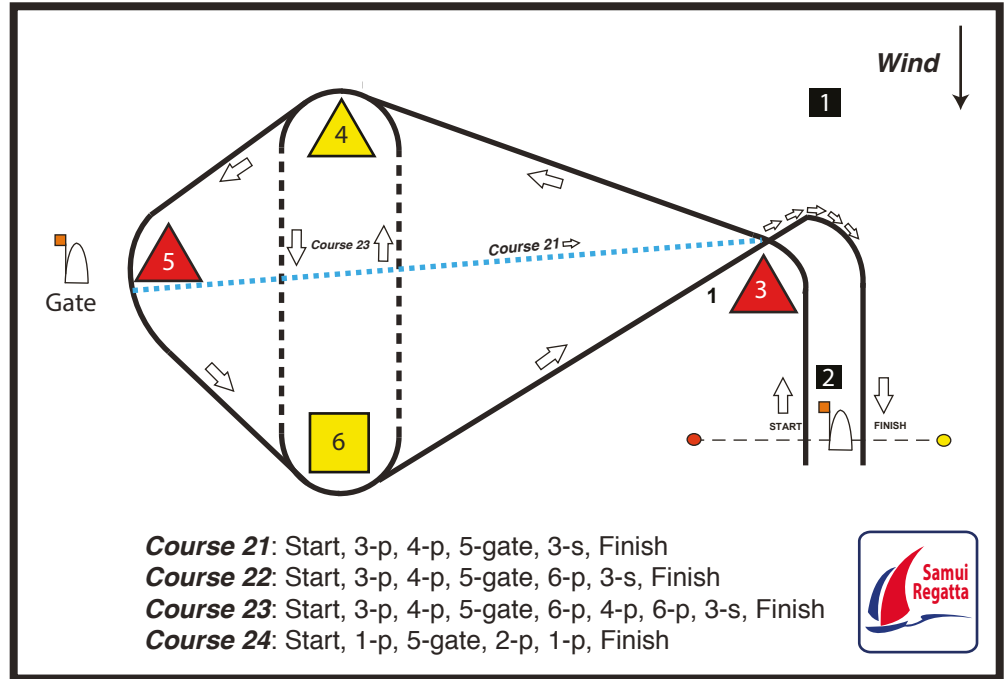


COURSE 18
START - 3 - Finish

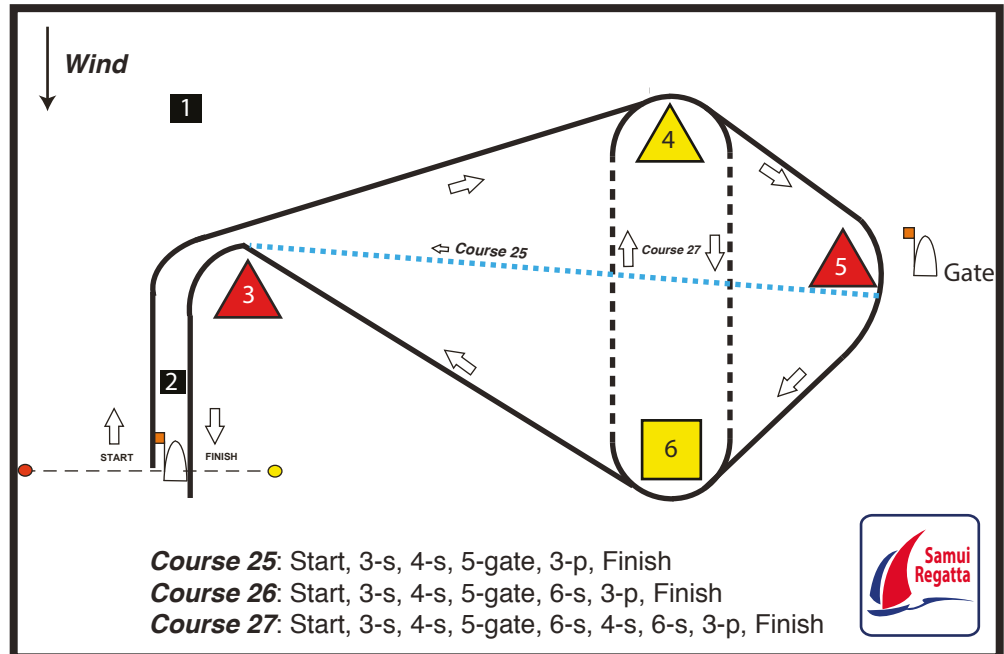
COURSE 19
START - 3 - 2 - 3 - FINISH

COURSE 20
START - 3 - 2 - 3 - 2 - 3 - FINISH

Mark positions shown in the course diagrams are for illustration only.
If there is any discrepancy between a course diagram and the written description, then the written description shall prevail.



Course 21: Start, 3-p, 4-p, 5-gate, 3-s, Finish
Course 22: Start, 3-p, 4-p, 5-gate, 6-p, 3-s, Finish
Course 23: Start, 3-p, 4-p, 5-gate, 6-p, 4-p, 6-p, 3-s, Finish
Course 24: Start, 1-p, 5-gate, 2-p, 1-p, Finish



Course 25: Start, 3-s, 4-s, 5-gate, 3-p, Finish
Course 26: Start, 3-s, 4-s, 5-gate, 6-s, 3-p, Finish
Course 27: Start, 3-s, 4-s, 5-gate, 6-s, 4-s, 6-s, 3-p, Finish



Mark positions shown in the course diagrams are for illustration only.
If there is any discrepancy between a course diagram and the written description, then the written description shall prevail.

Trapezoid Course

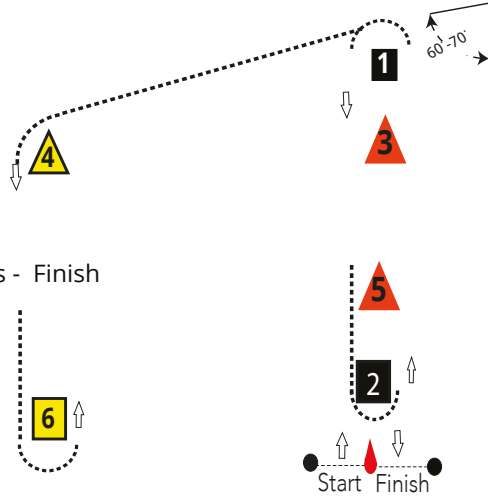
Direction of rounding:
p - Round to Port
s - Round to Starboard

Course: Inner Trapezoid

- I1 Start - 1p - 2p - 1p - 4p - 6p - 5s - Finish
- I2 Start - 3p - 2p - 3p - 4p - 6p - 5s - Finish
- I3 Start - 1p - 2p - 1p - 2p - 1p - 4p - 6p - 5s - Finish

Course: Outer Trapezoid

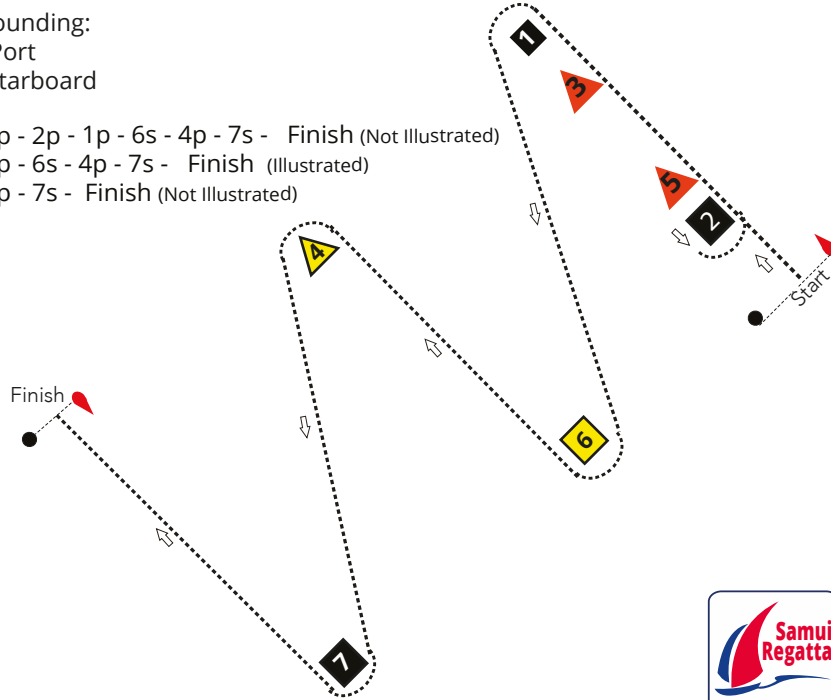
- O1 Start - 1p - 4p - 6p - 5s - Finish
- O2 Start - 3p - 4p - 6p - 5s - Finish
- O2 Start - 1p - 4p - 6p - 4p - 6p - 5s - Finish



ZigZag Courses

Direction of rounding:
p - Round to Port
s - Round to Starboard

- Z1 Start - 1p - 2p - 1p - 6s - 4p - 7s - Finish (Not Illustrated)
- Z2 Start - 1p - 6s - 4p - 7s - Finish (Illustrated)
- Z3 Start - 3p - 7s - Finish (Not Illustrated)

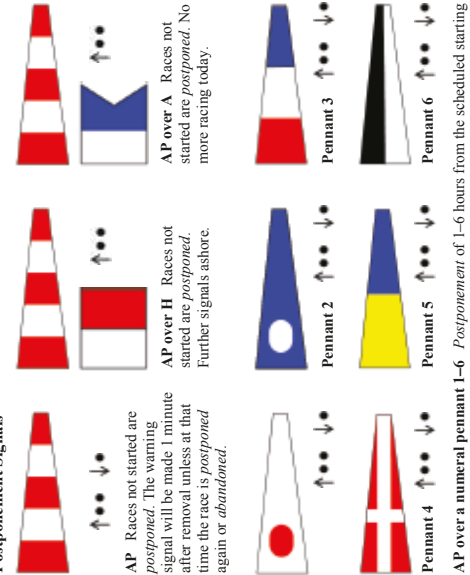


RACE SIGNALS

The meanings of visual and sound signals are stated below. An arrow pointing up or down (↑ ↓) means that a visual signal is displayed or removed. A dot (•) means a sound; five short dashes (-----) mean repetitive sounds; a long dash (—) means a long sound. When a visual signal is displayed over a class flag, the signal applies only to that class.

Postponement Signals

- AP Races not started are *postponed*. The warning signal will be made 1 minute after removal unless at that time the race is *postponed* again or *abandoned*.
- AP over A Races not started are *postponed*. No more racing today.
- AP over H Races not started are *postponed*. Further signals ashore.



Abandonment Signals

- N All races that have started are *abandoned*. Return to the starting area. The warning signal will be made 1 minute after removal unless at that time the race is *abandoned* again or *postponed*.
- N over A All races are *abandoned*. No more racing today.
- N over H All races are *abandoned*. Further signals ashore.

Preparatory Signals

- P Preparatory signal.
- I Rule 30.1 is in effect.
- Z Rule 30.2 is in effect.
- Black flag. Rule 30.3 is in effect.

Recall Signals

- X Individual recall.
- First Substitute General recall. The warning signal will be made 1 minute after removal.

Shortened Course

- S The course has been shortened. Rule 32.2 is in effect.

Changing the Next Leg

- C The position of the next mark has been changed:
- to starboard;
- to port;
- to increase the length of the leg;
- to decrease the length of the leg;

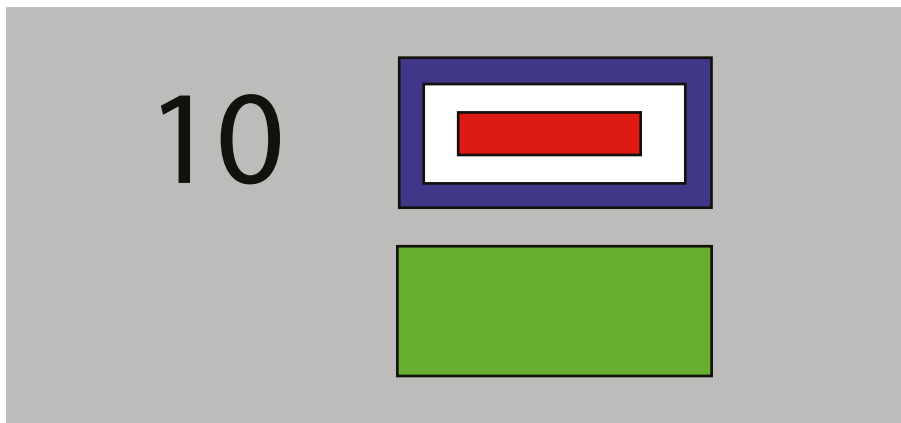
Other Signals

- L Ashore. A notice to competitors has been posted.
- Afloat. Come within hail or follow this boat.
- M The object displaying this signal replaces a missing mark.
- Return to Finish Complete rounding or passing of the mark and proceed directly to finish.
- Blue flag or race committee boat is in position at the finishing line.



Adding a windward mark

If Flag W is displayed with the course number board,
A new first mark will be added to the course.
This will be a mark to windward of the starting line.



The Rounding direction is indicated by the Coloured Board displayed below the W.

If a RED flag is displayed below flag W, then the mark is rounded to PORT

If a GREEN flag is displayed below flag W, then the mark is rounded to STARBOARD

The second mark of the course will be the first mark in the course description.

If a W flag is not flown, the first mark of the course will be the one listed in the course description.

This section does not apply to windward/leeward courses.

Those courses will be sailed as described in the Course Descriptions.

Return to Finish (Code Flag R)

A committee boat at a mark displaying a YELLOW Cross on a RED Background means complete the rounding or passing of the mark and the race direct to the finish line.



เมษายน APRIL				พฤษภาคม MAY				มิถุนายน JUNE									
เวลา	สูง (ม.)	เวลา	สูง (ม.)	เวลา	สูง (ม.)	เวลา	สูง (ม.)	เวลา	สูง (ม.)	เวลา	สูง (ม.)						
TIME	HT (M.)	TIME	HT (M.)	TIME	HT (M.)	TIME	HT (M.)	TIME	HT (M.)	TIME	HT (M.)						
1 FR	0400 1847	2.27 1.37	16 SA	0451 1452	2.21 1.36	1 SU	0413 1416	2.22 1.32	16 MO	0454 1325	1.94 1.26	1 WE	0513 1258 2043	1.76 1.27 1.79	16 TH	1239 2128	1.20 1.94
2 SA	0453 1835	2.24 1.36	17 SU	0552 1504	2.09 1.36	2 MO	0508 1447	2.11 1.33	17 TU	0554 1400 2156	1.78 1.28 1.86	2 TH	1318 2119	1.28 1.97	17 FR	1256 2157	1.20 2.03
3 SU	0603 1719	2.20 1.36	18 MO	0720 1525 2250	1.99 1.36 1.78	3 TU	0634 1507 2209	1.98 1.36 1.71	18 WE	1426 2208	1.30 1.97	3 FR	0544 0915 1336 2200	1.37 1.42 1.26 2.13	18 SA	0747 2228	1.19 2.11
4 MO	0744 1703	2.16 1.37	19 TU	0258 0852 1550 2254	1.69 1.91 1.37 1.89	4 WE	0151 0823 1517 2203	1.66 1.87 1.40 1.86	19 TH	0613 0919 1441 2228	1.48 1.54 1.33 2.07	4 SA	0644 1036 1356 2242	1.22 1.32 1.22 2.27	19 SU	0742 2259	1.12 2.17
5 TU	0918 1709 2306	2.15 1.41 1.69	20 WE	0423 0958 1612 2305	1.61 1.85 1.40 1.99	5 TH	0417 0949 1519 2230	1.54 1.77 1.42 2.04	20 FR	0642 1030 1453 2252	1.37 1.48 1.34 2.16	5 SU	0735 1135 1425 2324	1.11 1.25 1.18 2.36	20 MO	0801 2330	1.08 2.22
6 WE	0303 1021 1717 2312	1.59 2.11 1.46 1.84	21 TH	0532 1049 1624 2325	1.52 1.79 1.43 2.09	6 FR	0545 1051 1525 2304	1.41 1.67 1.41 2.21	21 SA	0712 1120 1508 2318	1.28 1.42 1.33 2.22	6 MO	0827 1230 1505	1.05 1.20 1.15	21 TU	0834	1.05
7 TH	0430 1113 1711 2337	1.52 2.05 1.50 2.00	22 FR	0635 1132 1630 2347	1.45 1.73 1.44 2.17	7 SA	0701 1144 1542 2341	1.30 1.56 1.37 2.35	22 SU	0745 1200 1526 2345	1.23 1.38 1.31 2.28	7 TU	0007 0916	2.41 1.03	22 WE	0004 0910	2.26 1.03
8 FR	0539 1158 1709	1.45 1.94 1.50	23 SA	0726 1209 1645	1.39 1.66 1.44	8 SU	0802 1230 1606	1.22 1.47 1.32	23 MO	0820 1237 1547	1.19 1.35 1.29	8 WE	0049 1000	2.42 1.03	23 TH	0041 0941	2.29 1.02
9 SA	0010 0700 1240 1723	2.16 1.39 1.82 1.45	24 SU	0013 0807 1242 1701	2.24 1.35 1.61 1.42	9 MO	0020 0858 1316 1637	2.44 1.17 1.39 1.28	24 TU	0015 0852 1315 1616	2.32 1.17 1.34 1.28	9 TH	0130 1034	2.38 1.04	24 FR	0118 1005	2.29 1.02
10 SU	0045 0820 1317 1746	2.31 1.35 1.69 1.40	25 MO	0040 0841 1314 1719	2.30 1.33 1.56 1.40	10 TU	0100 0949 1404 1712	2.49 1.16 1.33 1.27	25 WE	0049 0923	2.34 1.16	10 FR	0208 1039	2.31 1.07	25 SA	0155 1026	2.26 1.03
11 MO	0121 0919 1351 1813	2.41 1.33 1.57 1.35	26 TU	0110 0911 1349 1740	2.34 1.31 1.52 1.38	11 WE	0140 1036	2.48 1.17	26 TH	0126 0954	2.35 1.14	11 SA	0244 1045	2.21 1.08	26 SU	0229 1045	2.20 1.05
12 TU	0200 1011 1421 1836	2.46 1.34 1.48 1.33	27 WE	0143 0945 1428 1803	2.36 1.30 1.47 1.37	12 TH	0220 1112	2.43 1.19	27 FR	0202 1030	2.34 1.14	12 SU	0315 1112	2.08 1.10	27 MO	0300 1055	2.08 1.09
13 WE	0240 1107 1451 1858	2.45 1.35 1.42 1.33	28 TH	0216 1029 1512 1820	2.36 1.30 1.42 1.37	13 FR	0259 1130	2.35 1.21	28 SA	0237 1110	2.30 1.15	13 MO	0340 1142	1.93 1.12	28 TU	0327 1100 1756 2143	1.93 1.11 1.55 1.47
14 TH	0321 1908	2.40 1.36	29 FR	0252 1121	2.34 1.31	14 SA	0336 1201	2.23 1.22	29 SU	0312 1147	2.22 1.18	14 TU	0330 1206 2036	1.77 1.15 1.72	29 WE	0349 1116 1849	1.74 1.12 1.70
15 FR	0403 1424	2.32 1.36	30 SA	0330 1253	2.29 1.32	15 SU	0414 1244	2.09 1.24	30 MO	0346 1215	2.11 1.22	15 WE	1224 2102	1.18 1.84	30 TH	1135 1949	1.12 1.85
									31 TU	0425 1237	1.95 1.25						



Five days of professionally run, international yacht racing around the tropical island of Koh Samui, combined with five nights of beachside presentations and a stunning Gala Dinner at Centara Grand Beach Resort.

16th Koh Samui REGATTA

20th - 27th May 2017
Chaweng Beach, Koh Samui, Thailand

facebook.com/samuiregatta
www.samuiregatta.com

facebook.com/bayregatta
www.bayregatta.com
email: thebayregatta@regattas.asia



Join Thailand's "Fun" Regatta with 4-day racing, visiting 4-stunning destinations. All types of boats welcome, unique race courses, fantastic parties and daily prize giving.



The Bay Regatta 2017

15th - 19th February
Phuket • Phang Nga • Krabi

Host Sponsor



Co-Sponsors



Supporting Sponsors



Media Partners



facebook.com/samuiregatta
WWW.SAMUIREGATTA.COM



See you next year...
20th - 27th May 2017