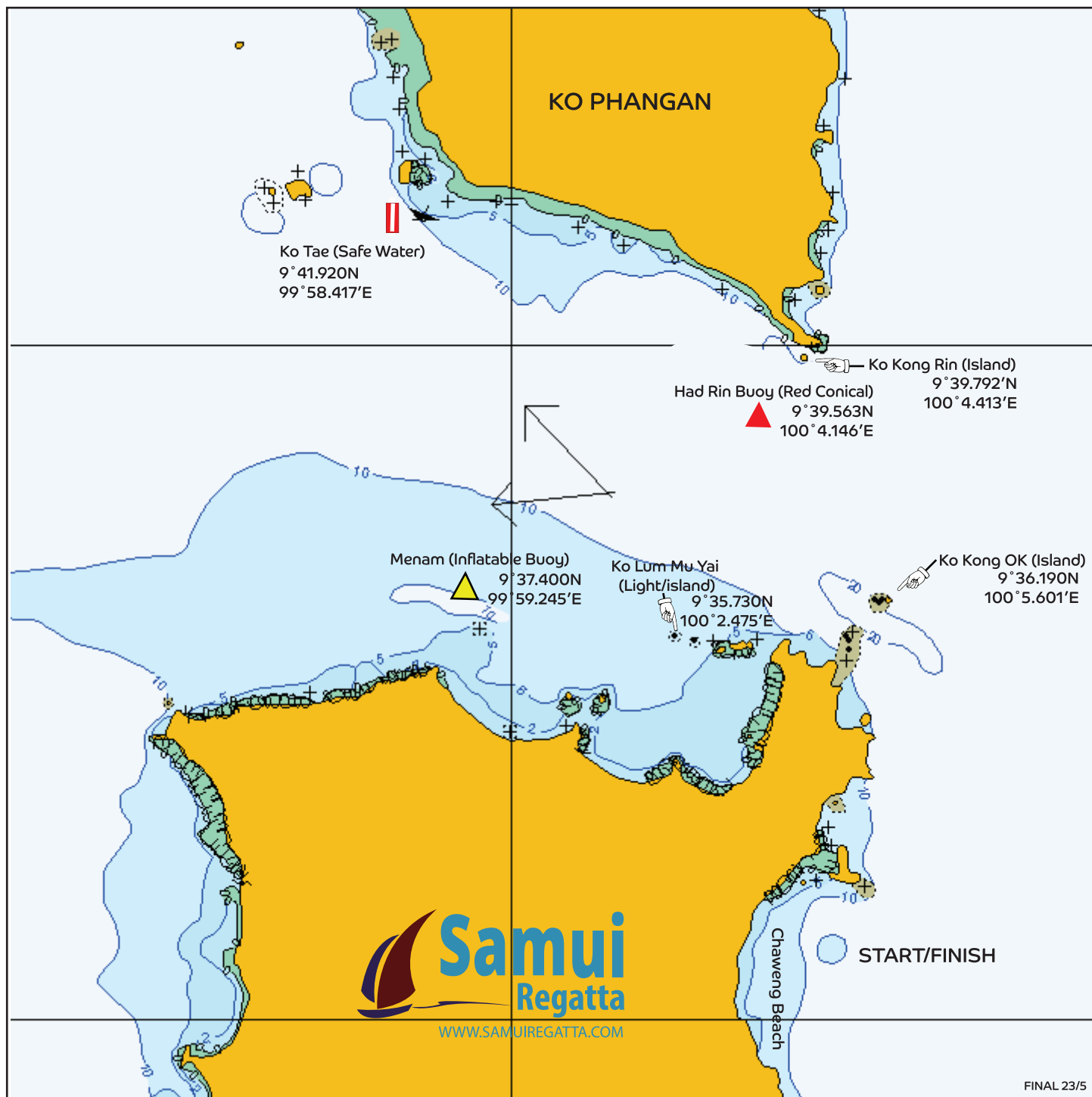


Samui Regatta 2023

Mark Positions - North



Coastal Courses

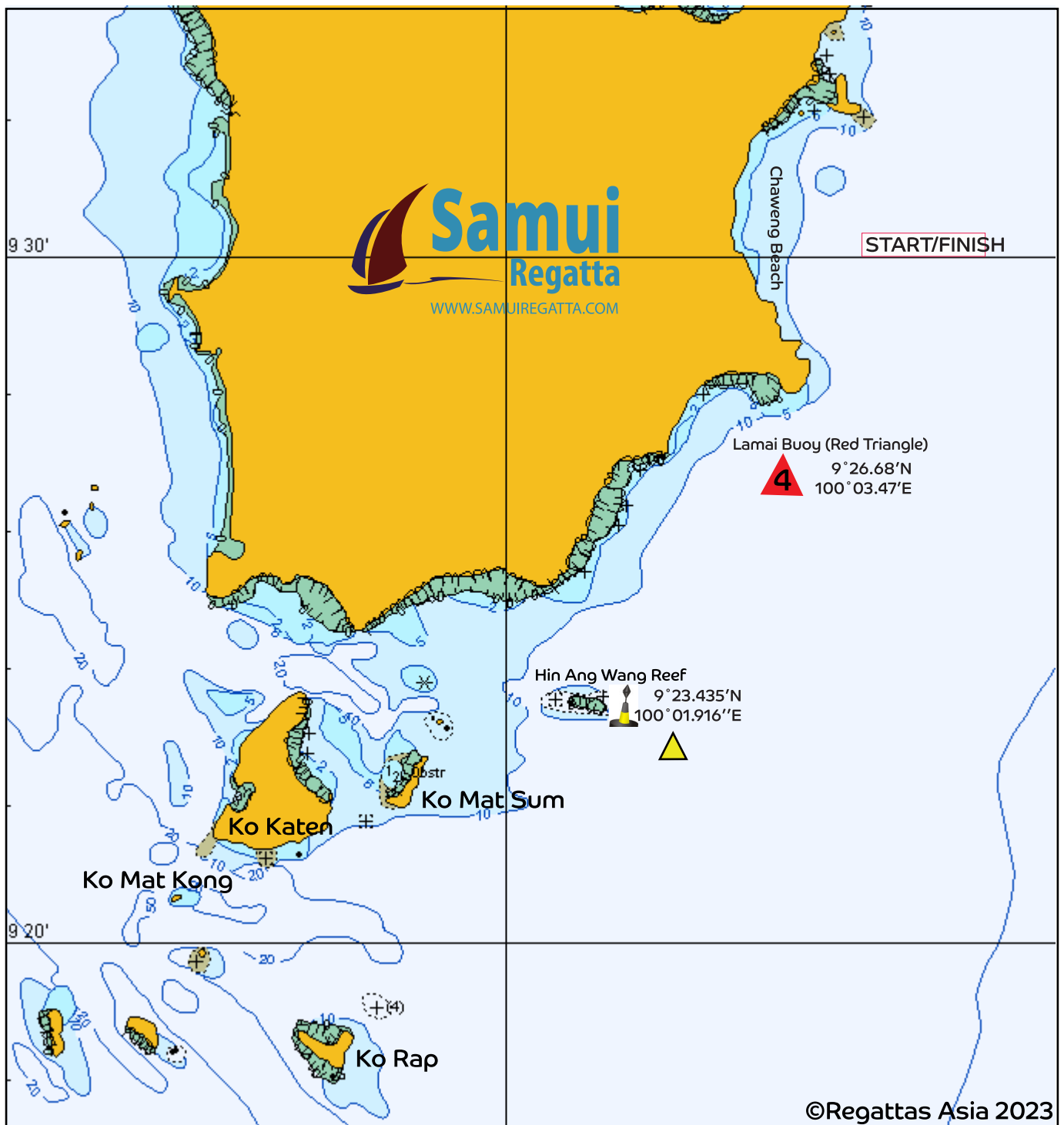
Mark Positions - North

REGATTA HQ	9° 31.11'N	100° 03.58'E
Ko Kong Rin Island	9° 39.793'N	100° 04.413'E
Had Rin Buoy (Red)	9° 39.56'N	100° 04.146'E
Menam Mark	9° 37.400'N	99° 59.245'E
Ko Tae (Safe Water Mark)	9° 41.902'N	99° 58.417'E
Ko Lum Mu Yai (Outer Light)	9° 35.730'N	100° 02.475'E
Ko Kong OK	9° 36.190'N	100° 05.601'E

Mark positions shown in the course diagrams are for illustration only.

If there is any discrepancy between a course diagram and the written description, then the written description shall prevail.

Samui Regatta 2023
South Course Mark Positions



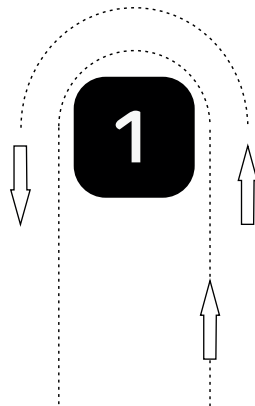
Coastal Courses
Mark Positions - South

MARK 4 - LAMAI 9° 26.68'N 100° 03.47'E

HIN ANG WANG REEF REEF EXTENDS at N9° 23.57 between
100° 00.50'E and 100° 01.80 E
YACHTS SHALL NOT PASS BETWEEN HIN ANG WANG REEF
AND THE EAST CARDINAL MARK

HIN ANG WANG (Cardinal Mark) 9° 23.435'N 100° 01.916'E

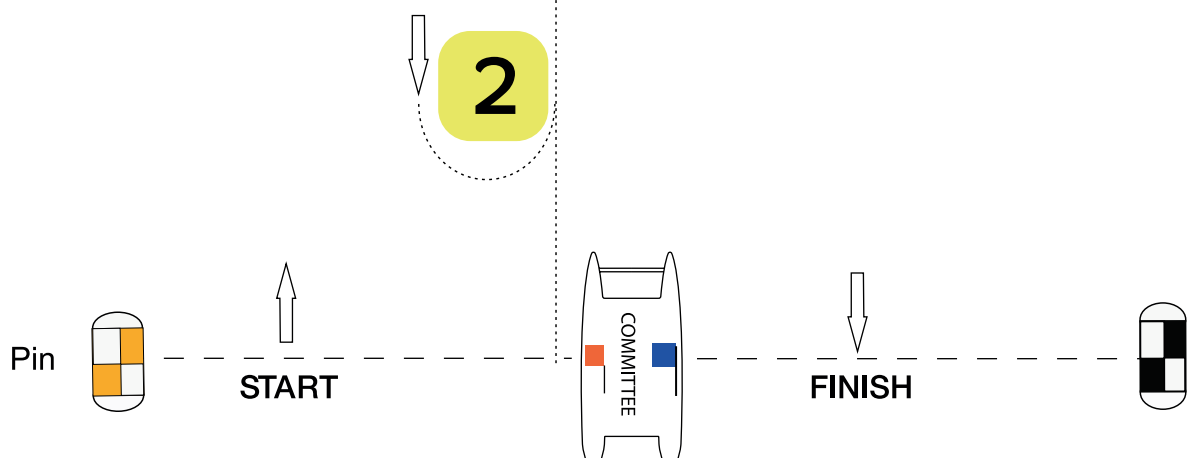
Mark positions shown in the course diagrams are for illustration only.
If there is any discrepancy between a course diagram and the written description,
then the written description shall prevail.



Courses 1 - 3 (Windward/Leeward)

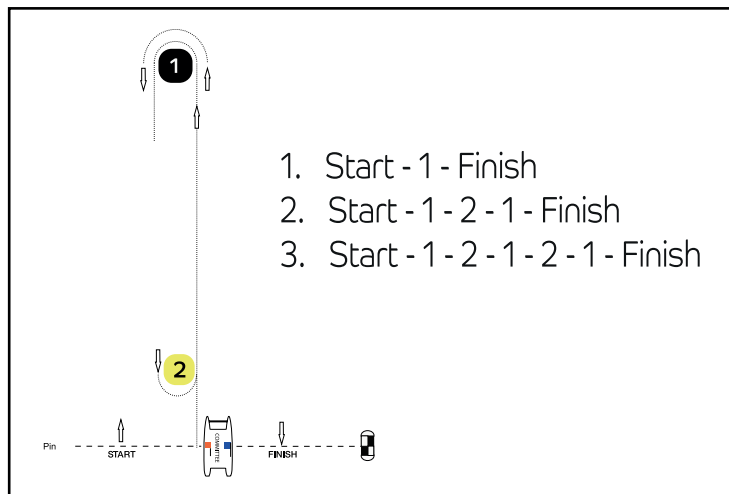
All marks rounded to port

1. Start - 1 - Finish
2. Start - 1 - 2 - 1 - Finish
3. Start - 1 - 2 - 1 - 2 - 1 - Finish



Courses 1 - 3 (Windward/Leeward)

All marks rounded to port



South Courses:

NOTE SI 8.10 Adding a Windward Mark

Course 10

Start
Round Hin Ang Wang to Port
Pass Through Gate (Cardinal Mark to Port)
Finish

Course 11

Start
Round Mark 4 (Lamai) to Port
Round Hin Ang Wang to Port
Pass Through Gate (Cardinal Mark to Port)
Finish

Course 12

Start
Round Mark 1 to Port
Round Hin Ang Wang to Port
Pass Through Gate (Cardinal Mark to Port)
Round Mark 1 to Port
Finish

North Courses:

NOTE SI 8.10 Adding a Windward Mark

Course 4

Start
Round Ko Kong OK to Port
Finish

Course 5

Start
Pass Ko Kong OK to Port
Round Had Rin (Red) Buoy to Port
Round Ko Kong OK to Port
Finish

Course 6

Start
Pass Ko Kong OK to Port
Round Had Rin (Red) Buoy to Port
Round Menam (Inflatable) Buoy to Port
Round Ko Kong OK to Starboard
Finish

Course 7

Start
Pass Ko Kong OK to Port
Round Ko Tae (Safe Water) Mark to Port
Round Ko Kong OK to Starboard
Finish

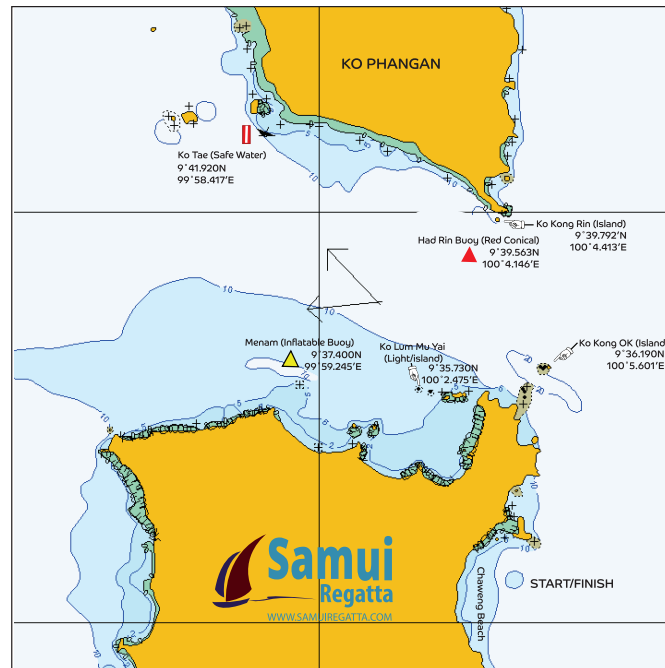
Course 8

Start
Pass Ko Kong OK to Port
Round Ko Tae (Safe Water) Mark to Port
Round Menam (Inflatable) Buoy to Port
Round Ko Kong OK to Starboard
Finish

Course 9

Pass Ko Kong OK to Port
Round Ko Tae (Safe Water) Mark to Port
Round Had Rin (Red) Buoy to Starboard
Pass Ko Kong OK to Starboard
Finish

Samui Regatta 2023
Mark Positions - North



Samui Regatta 2023
South Course Mark Positions

